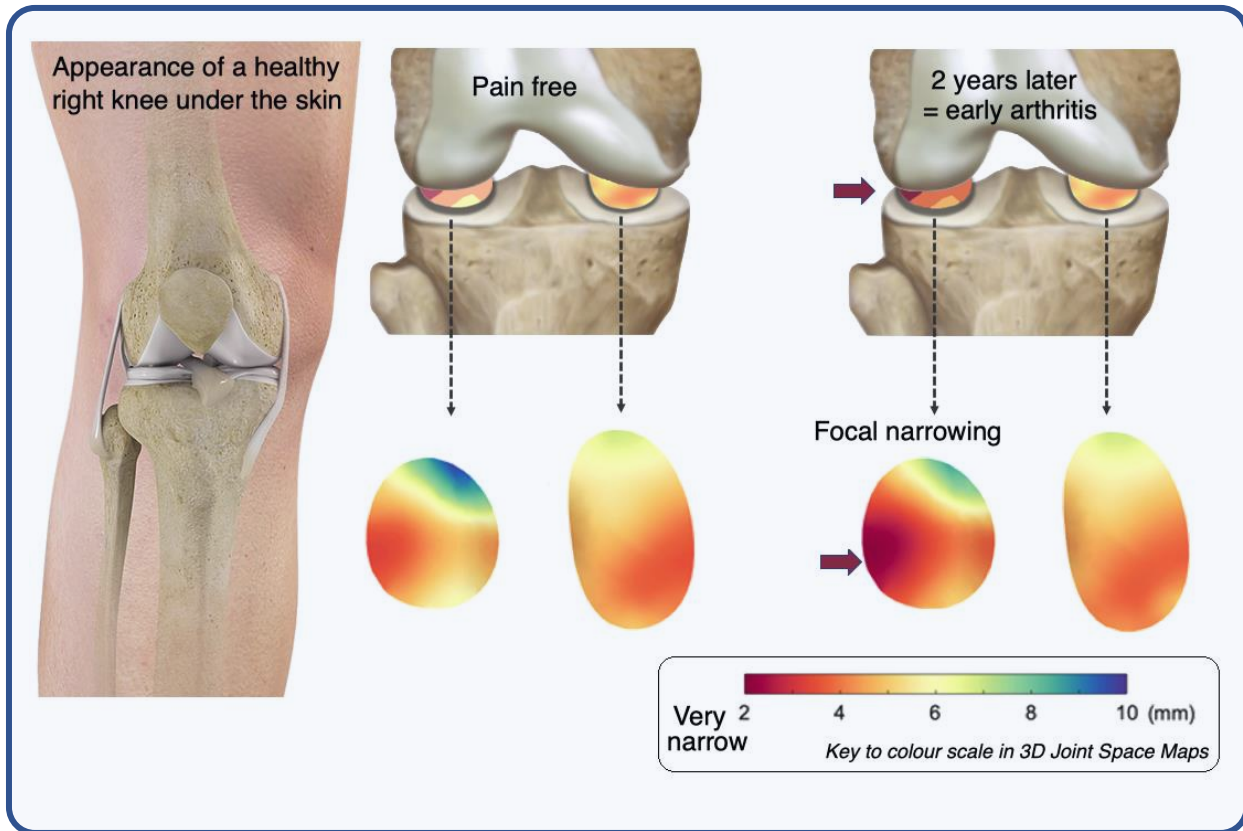


## Nutrition, Obesity, Metabolism and Endocrine

In collaboration with – **Radiology, Advanced Therapies and Medical Devices** themes



### Key research impact

Computers can now analyse 3D CT and MRI scans to detect early osteoarthritis.

A process called "3D Joint Mapping" is where a computer reads the scans and recognises patterns of arthritic joint disease.

This helps us identify patients with the specific patterns of arthritis that we want to invite to take part in clinical trials involving cell therapies.

The technologies measure disease progression in a useful time frame and can assess the effect of therapy on disease progression.

### References

Radiology 2021 PMID:33847516

Scientific Reports 2020 PMID:32139721

J Magnetic Resonance Imaging 2020 PMID:32447815